



McLoughlin Boulevard Investments Strategy

COMMUNITY SOUNDING BOARD MEETING #1

OCTOBER 6, 2022

Google

Agenda



Introductions



Project Overview



Walking and Biking Safety Treatments



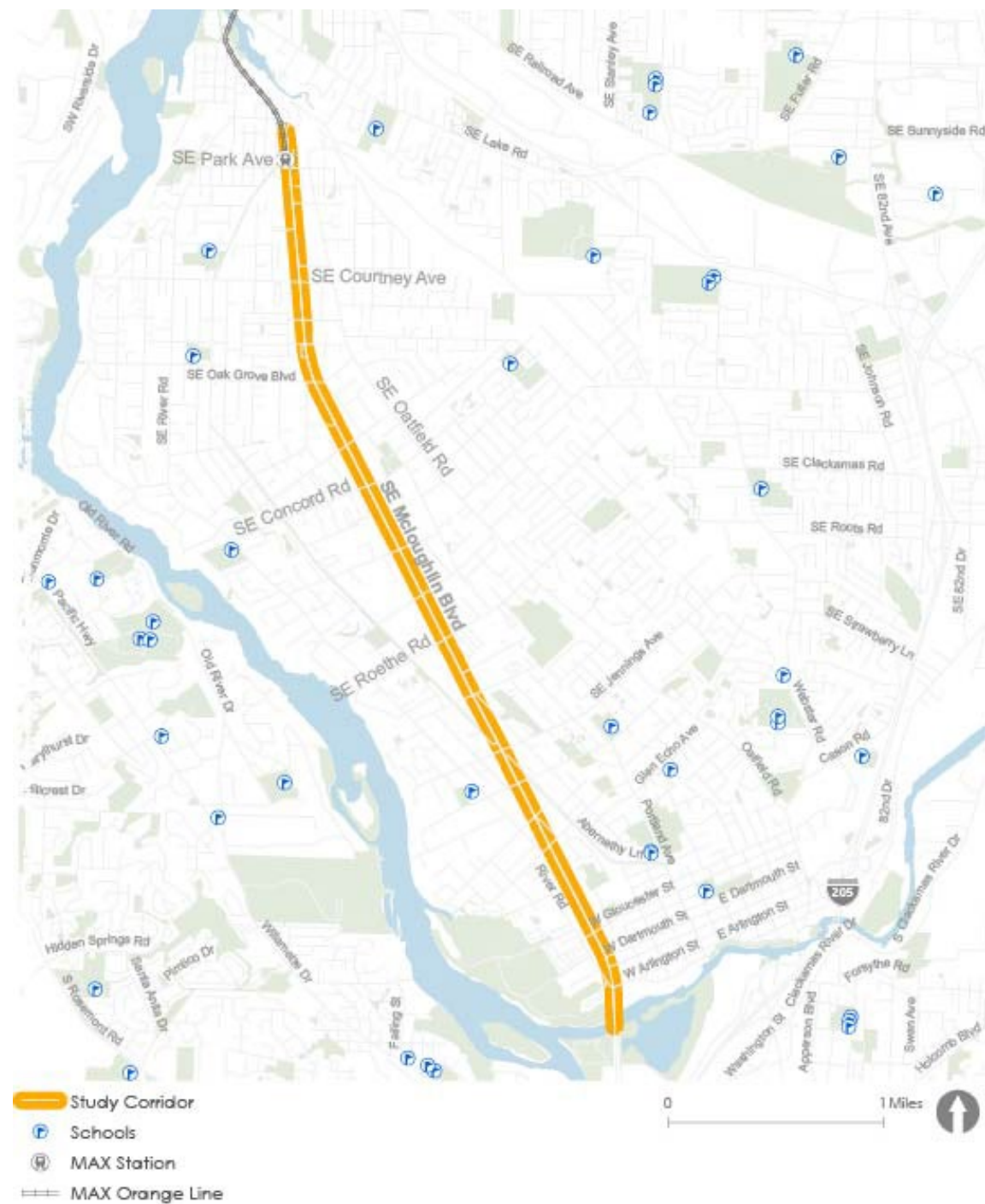
Corridor Safety Discussion



Next Steps

Study Area

5-mile corridor between
Milwaukie and the Clackamas
River Bridge in Gladstone



PROJECT OVERVIEW

Identify **near-term improvements** (up to 10 years) to address safety of people walking and biking as well as transit enhancements on the corridor

Involve a cross section of stakeholders, **including traditionally underserved communities**, to inform community and investment priorities

Leverage recent work, momentum, and upcoming corridor investments

Building on Past Work

- Regional Investment Measure Materials
- Local TSPs
- McLoughlin Crossing Study
- McLoughlin Road Safety Audit (MP 9.53 to 9.99)
- McLoughlin Area Plan (MAP-IT)
- ADA Litigated Sites
- Ask ODOT database
- Clackamas County Park Avenue Community Project Alternatives
- STIP projects
- ODOT Active Transportation Needs
- Zoning/land use maps
- Metro Urban Arterials Regional Transportation Plan Policy Maps

Process



```
graph LR; A[Identify Goals & Corridor Needs] --> B[Develop Solutions]; B --> C[Apply Selection Criteria & Finalize Project List]; C --> D[Develop Funding & Implementation Strategy]; D --> E[Develop Investments Strategy];
```

Identify Goals &
Corridor Needs

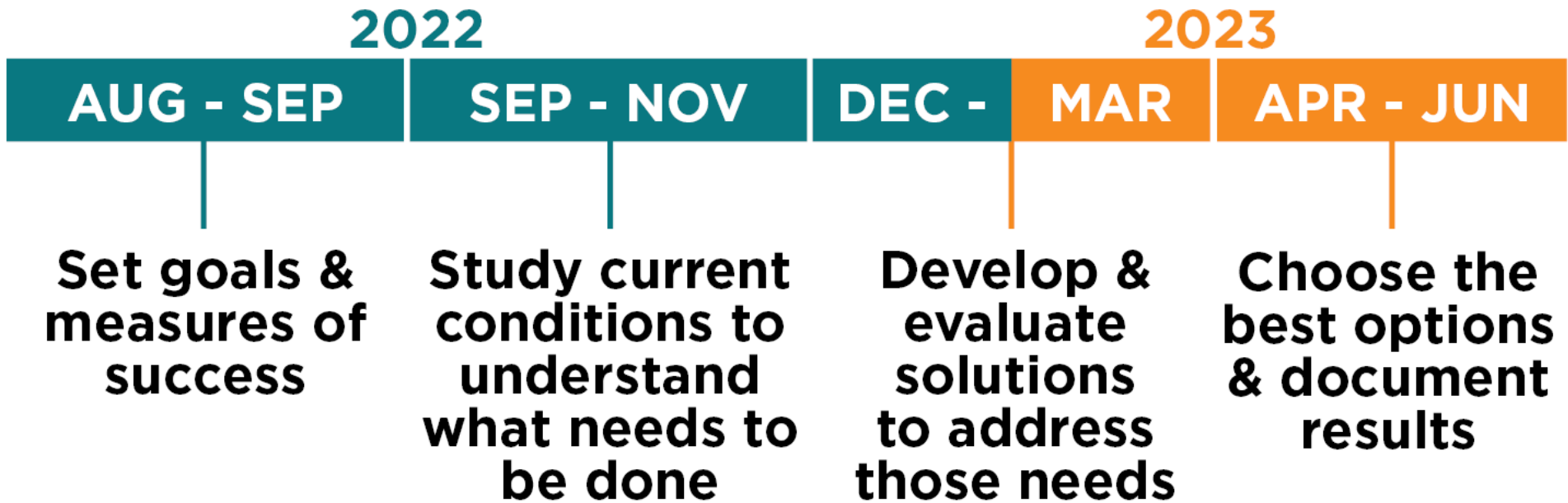
Develop
Solutions

Apply Selection
Criteria &
Finalize Project
List

Develop
Funding &
Implementation
Strategy

Develop
Investments
Strategy

Project Schedule



Public Involvement

Outreach

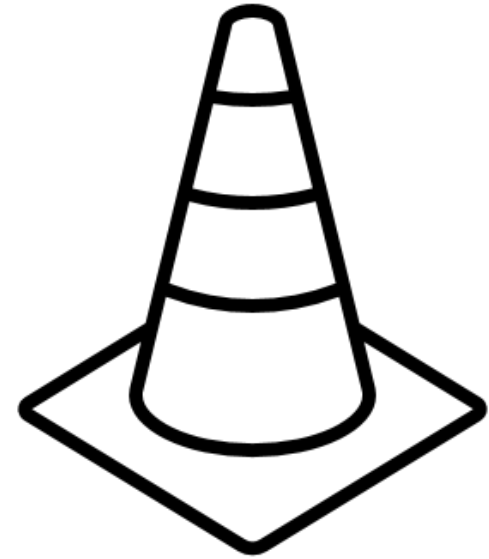
- Intercept and Online Survey in English and Spanish in later October
- Tabling event next spring
- Community Sounding Board (this group)

Questions For You

- Who is missing?
- Can you help with outreach?

Transportation Safety

- Identified as a high crash corridor in the region
- Many sections of the corridor are identified as ODOT Safety Priority Index System segments, indicating a safety priority for ODOT due to past crash history
- Between 2016 – 2021 there were 8 fatal crashes and 29 severe (life altering) injury crashes
 - 7 of the 8 fatal crashes involved someone walking or rolling (wheelchair)

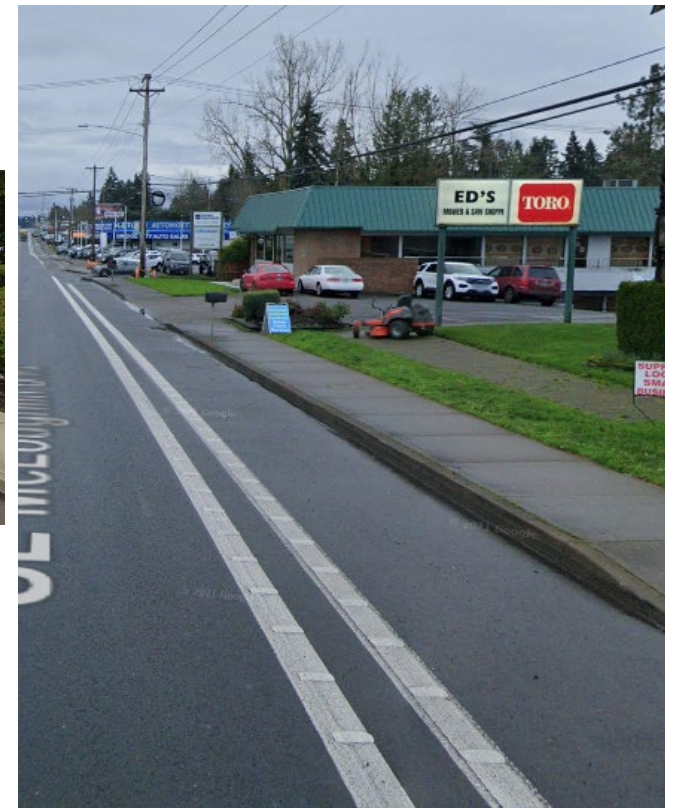
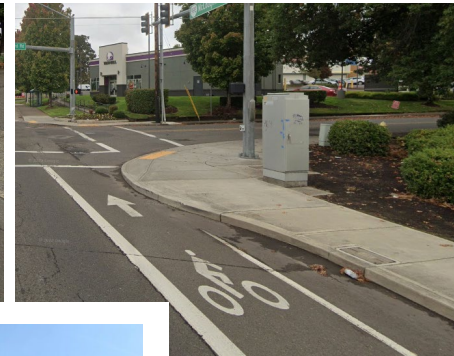


5- Minute Break

Walking and Biking Treatment Examples: Crossings



Biking Treatment Examples





Other Walking and Biking Treatment Examples

- Planted buffer strip
- Leading pedestrian intervals
- High visibility crosswalk markings
- Lighting
- Curb extensions
- Protected left turn signal phasing
- Green skip striping
- Traffic calming/speed reduction treatments
 - Speed feedback signs
 - Lane restriping



Transit Enhancement Examples

- Bus shelters
- Lighting at transit stops
- Crossings near transit stops
- Queue jumps/business access transit lanes
- Transit signal priority

Corridor Safety Discussion

1. What are the key challenges that you and your community face when walking, biking, or taking transit on the corridor?
2. Have you used either of the new crossings at Boardman or Hull, and did you feel comfortable crossing at those locations?
3. What are the key locations that are challenging to access?
4. What types of near-term solutions would you like to see?

Next Steps

- Understanding and Identifying Corridor Needs
 - Public Outreach Event in October – Intercept and Online Surveys
 - Please help promote the online survey within your groups!
- Next Meetings
 - Optional: November 2022 – “Road Safety Audit Lite”
 - Mid-February 2023 – Discuss developing solutions
 - Late April 2023 – Present draft solutions
- Staff Contact
 - Sandra Hikari, ODOT Project Manager | 503-731-8246 | sandra.y.hikari@odot.oregon.gov
 - Project website: [TinyURL.com/ODOTMcLoughlinStrategy](https://tinyurl.com/ODOTMcLoughlinStrategy)